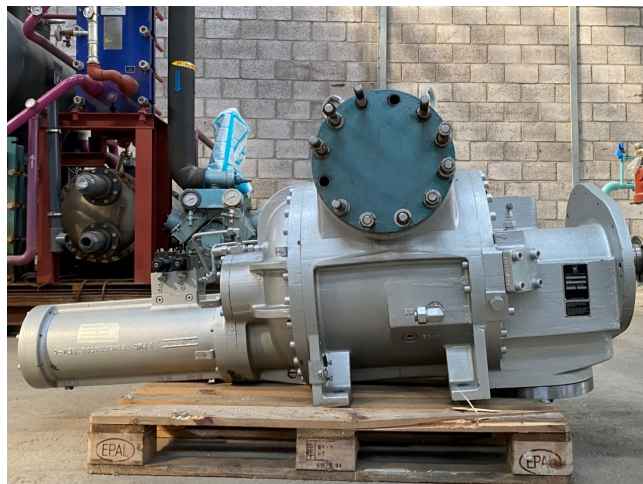


# Sabroe SAB 233 E

## Specifications

Brand	Sabroe
Type	SAB 233 E
Refrigerant	NH 3 / Freon
Electromotor Specs	50 Hz - 132 kW - 400V - 2983 RPM
m3 / h	2323 (3000 rpm); 2788 (3600 rpm)
Weight in kg.	Electric motor: 775kg
Sizes	Compressor: 2000X1180x940 electric motor: 1470x900x880 (LxWxH)
Stock	1



## Description

### Used Sabroe SAB 233 E

Used Sabroe SAB 233 E open drive screw compressor for NH3 and freon. Nominal capacities at 3600 RPM for NH3:

High stage -10/+35°C: 1826 kW  
Booster -40/-10°C: 537kW  
With economiser -40/+35°C: 520 kW

\*Why choose for HOSBV? We are not only the largest used refrigeration specialist in Europe, but also, we solely deliver our orders after performing an extensive test and an industrial cleaning. If requested we are happy to arrange your logistics.





